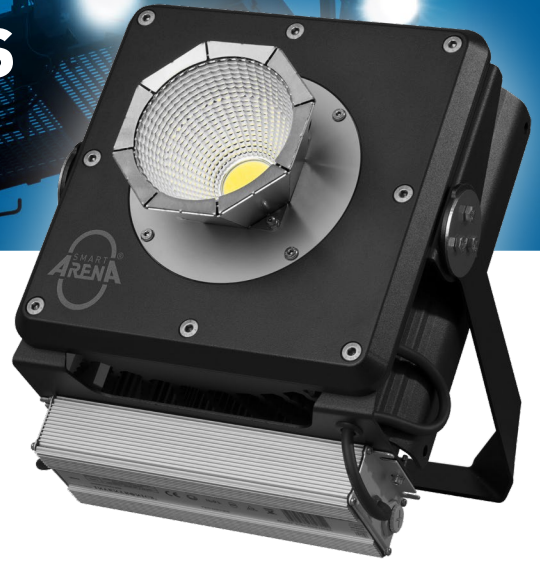




# LARGE SCALE LIGHTING

## TERA 2.0 SERIES



### SPECIFICATIONS

	BASIC	ADVANCED	HIGH-END
<b>LUMINOUS FLUX</b>	35.000 Lm	38.000 Lm	40.000 Lm
<b>ELECTRICAL POWER CONSUMPTION   RATED VOLTAGE</b>	300 W AC 230 V/50 Hz	350 W AC 230 V/50 Hz	400 W AC 230 V/50 Hz
<b>LIGHT DISTRIBUTION</b> interchangeable optical system	R 10°   R 15°   R 25°   R 35°   R 45°   R 60°   R 90° High performance reflectors or lenses		
<b>CCT</b>	5700 K – others on request		
<b>POWER FACTOR</b>	0,98		
<b>IP RATING</b>	IP67		
<b>SIZE (H x L x W)</b>	260 x 260 x 165 mm (without bracket and optic)		
<b>WEIGHT (kg)</b>	approx. 7 - 10 kg according to configuration		
<b>Lumen Maintenance</b>	23.000 hrs L90, min. 80.000 hrs L80 (T <sub>a</sub> = 15°C)		
<b>FLICKER</b>	0 % also in dimmed operation!		
<b>TV COMPLIANT</b>	HD UHD/4k SSM (super slow motion)		
<b>TEMP-SAVE</b> (overheat-protection)	✓	✓	✓
<b>ACTIVE THERMO-MANAGEMENT</b>	✗	✓	✓
<b>EPA</b>	0,085 m <sup>2</sup>	0,085 m <sup>2</sup>	0,098 m <sup>2</sup>
<b>CRI</b>	Ra > 85	Ra > 85	Ra 97
<b>TLCI - Television Lighting Consistency Index</b>	80	80	95
<b>DIMMING</b>	✗	SWITCH DIMMING programmable	DMX/RDM DIMMING



**SOFT-LED SYSTEM GMBH**  
 Wiener Straße 111  
 Objekt 3.4.G WINPARK  
 A-2700 Wiener Neustadt

(T) +43 2622 90409  
 (F) +43 2622 90499  
 (M) info@soft-led.at  
[www.smart-arena.com](http://www.smart-arena.com)